

## Norfolk Fungus Study Group Foray Report

### Bergh Apton (BACT). Sunday 19th April 2026.

Twenty of us gathered in the field next to Burgh Apton Church, which is adjacent to the gate leading into Bergh Apton Conservation Trust's reserve, on Sunday 19th April. We had two people new to our events and it was good to meet them. It had been a fairly dry few weeks leading up to this foray so we were keen to explore the wetter parts.



Set up in 1994 Bergh Apton Conservation Trust promotes the conservation of wildlife and biodiversity in and around Bergh Apton, a village of some 450 inhabitants, located 7 miles south-east of Norwich.

They own and manage this 22-acre nature reserve comprising marshes, ponds and woodland on the northern flank of the Chet valley. They organise an annual programme of field meetings and talks for members and guests.

We were met by Tony Davy - one of the trustees who gave us a brief history the site. Most of the fungal records for the reserve have been gathered in autumn at public events and have concentrated on macro fungi in the woodland area at the entrance to the site. So the decision was then taken to march to the far end of the reserve - an unusual activity for our group - to explore the ponds and marshy areas!

As expected any recording was dominated by microfungi with very few gilled examples on show - although two types of fieldcap, yellow and spring, were spotted by the more eagle-eyed of the group. There were plenty of rusts on the emergent vegetation - two on the *Adoxa moschatellina*, others on the *Arum maculatum*, buttercup, bluebell, bramble and nettle. Ramularias also seemed to be benefitting from the lush new growth on the plants - there were seven records. There were some brackets - Alder, Southern, Turkeytail and Blushing and Smoky. To add colour to the findings was a very photogenic Scarlet Elfcup on a branch - this was subsequently confirmed by microscopy.

For the second time we were able to have lunch on proper seats rather than search out logs - a very pleasant affair in the spring sunshine. After lunch we were entertained with great views of slow worms when somebody turned over some corrugated iron sheets adjacent to the seating area.

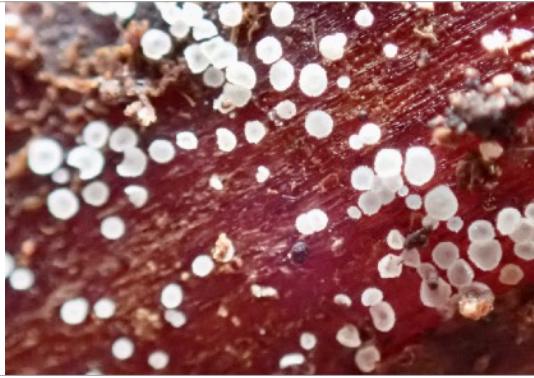
The rest of the day continued to be dominated by ascomycetes and a box tree proved quite productive. In an effort to re-find Bracken map to show to our new attendees a colony of *Micropodia pteridina*/Bracken Swarmer was discovered. This fungus is supposedly ubiquitous but not often recorded. There are only three records on the Norfolk Mycota in the last twenty or so years. See photos.

As we climbed back up to the drier woodland, enjoying excellent vistas of bluebells, there was a rather tatty Bay Polypore, a group of inkcaps, and, in the leaf litter, unusually for this time of year, a Lilac Fibrecap. Finally *Monilinia johnsonii* was found on the hawthorn leaves in the hedge in the carpark. Everybody seemed to enjoy the visit to this reserve and we passed our thanks in person to Tony for a very enjoyable day.

There were 56 field identifications and a final total of 124 species. A big thanks to those who came and helped with the finds and who did the homework to create the final list.

When comparing the list with the current Norfolk Mycota, and the 2026 list so far, there are 93 new species for the site.

There is only one new species for the county - *Geejayessia cicatricum* - which forms red brown spots on the buds of Box. There was also a second record for Norfolk - *Ellisembia leptospora* found here growing on the dead wood of common elder.



*Micropodia pteridina*/Bracken Swarmer



*Sarcoscypha austriaca*/Scarlet Elfcup



*Melampsora epitea*



*Coprinopsis atramentaria*/Common Inkcap





*Polyporus badius*/Bay Polypore



*Inocybe lilacina*/Lilac Fibrecap



*Badhamia utricularis*



*Bolbitius titubans*/Yellow Fieldcap

## Finds

SCIENTIFIC NAME	COMMON NAME	SUBSTRATE	ASSOCIATED ORGANISM
<i>Acrospermum compressum</i>		dead stem	Urtica dioica
<i>Agrocybe praecox</i>	Spring Fieldcap	soil	Poaceae
<i>Ascodichaena rugosa</i>		bark	Quercus
<i>Athelia arachnoidea</i>	Cobweb Duster	apothecia	Xanthoria parietina
<i>Auricularia auricula-judae</i>	Jelly Ear	dead twig	
<i>Badhamia utricularis</i>		dead branch	Fraxinus excelsior
<i>Bjerkandera adusta</i>	Smoky Bracket	dead trunk	Salix
<i>Boeremia hedericola</i>		live leaf	Hedera helix
<i>Bolbitius titubans</i>	Yellow Fieldcap	soil	Poaceae
<i>Byssomerulius corium</i>	Netted Crust	dead branch	
<i>Cacumisporium capitulatum</i>		dead leaf	Quercus robur
<i>Calloria tremelloides</i>	Nettle Pox	dead stem	Urtica dioica
<i>Calycina claroflava</i>	Sulphur Disco	fruitbody	Diatrypella quercina
<i>Camarosporium oreades</i>		dead leaf	Quercus robur
<i>Caryophylloseptoria lychnidis</i>		live leaf	Silene dioica
<i>Chaetosphaerella phaeostroma</i>		dead branch	Fraxinus excelsior
<i>Coprinopsis atramentaria</i>	Common Inkcap	soil	
<i>Cryptostroma corticale</i>	Sooty Bark Disease	trunk	Acer pseudoplatanus
<i>Daedaleopsis confragosa</i>	Blushing Bracket	dead log	Salix
<i>Daldinia concentrica</i>	King Alfred's Cakes	trunk	Fraxinus excelsior

SCIENTIFIC NAME	COMMON NAME	SUBSTRATE	ASSOCIATED ORGANISM
<i>Dendrothele acerina</i>	Maple Whitewash	trunk	<i>Acer campestre</i>
<i>Diaporthe circumscripta</i>		dead twig	<i>Sambucus nigra</i>
<i>Diaporthe sarothamni</i>		dead twig	<i>Cytisus scoparius</i>
<i>Diatrype stigma</i>	Common Tarcrust	fallen branch	<i>Acer campestre</i>
<i>Diatrypella quercina</i>	Oak Blackhead	dead branch	<i>Quercus</i>
<i>Dothiorella candollei</i>		dead leaf	<i>Buxus sempervirens</i>
<i>Ellisembia leptospora</i>		dead wood	<i>Sambucus nigra</i>
<i>Entyloma ficariae</i>		live leaf	<i>Ranunculus ficaria</i>
<i>Eutypa lata</i>		dead wood	<i>Hedera helix</i>
<i>Eutypa maura</i>		dead branch	<i>Acer pseudoplatanus</i>
<i>Eutypella prunastri</i>		dead branch	<i>Prunus spinosa</i>
<i>Ganoderma adspersum</i>	Southern Bracket	dead standing trunk	
<i>Geejayessia cicatricum</i>		dead twig axil	<i>Buxus sempervirens</i>
<i>Geejayessia desmazieri</i>		dead twig	<i>Buxus sempervirens</i>
<i>Gnomonia gnomon</i>		dead leaf	<i>Corylus avellana</i>
<i>Hyaloperonospora nasturtii-aquatici</i>		live leaf	<i>Cardamine flexuosa</i>
<i>Hyaloperonospora niessliana</i>		live leaf	<i>Alliaria petiolata</i>
<i>Hypholoma fasciculare</i>	Sulphur Tuft	dead wood	<i>Fraxinus excelsior</i>
<i>Hypoxylon fuscum</i>	Hazel Woodwart	dead branch	<i>Alnus glutinosa</i>
<i>Hypoxylon petriniae</i>		dead branch	<i>Fraxinus excelsior</i>
<i>Inocybe lilacina</i>	Lilac Fibrecap	soil/woody litter	
<i>Lachnum virgineum</i>	Snowy Disco	dead stem	<i>Angelica sylvestris</i>
<i>Leptosphaeria acuta</i>	Nettle Rash	dead stem	<i>Urtica dioica</i>
<i>Lophiostoma angustilabrum</i>		dead twig	<i>Ulex europaeus</i>

SCIENTIFIC NAME	COMMON NAME	SUBSTRATE	ASSOCIATED ORGANISM
<i>Massaria gigantispora</i>		dead branch	Acer campestre
<i>Melampsora epitea</i>		live leaf	Euonymus europaeus
<i>Melanomma pulvis-pyrius</i>		dead wood	Corylus avellana
<i>Mensularia radiata</i>	Alder Bracket	dead standing trunk	Alnus glutinosa
<i>Metasphaeria complanata</i>		dead stem	Angelica sylvestris
<i>Micropodia pteridina</i>		dead stem	Pteridium aquilinum
<i>Microthyrium ciliatum</i>		dead leaf	Ilex aquifolium
<i>Monilinia johnsonii</i>		live leaf	Crataegus monogyna
<i>Mycosphaerella punctiformis</i>		dead leaf	Quercus robur
<i>Nemania serpens</i>		fallen branch	Quercus robur
<i>Neoerysiphe galeopsidis</i>	Mint Mildew	live leaf	Lamium purpureum
<i>Neoerysiphe galii</i>		live leaf	Galium aparine
<i>Nitschkea collapsa</i>		dead wood	Acer campestre
<i>Ophiognomonia alni-viridis</i>		dead leaf	Alnus glutinosa
<i>Ophiognomonia intermedia</i>		dead leaf	Betula pendula
<i>Ophiognomonia ischnostyla</i>		dead leaf	Corylus avellana
<i>Panaeolus acuminatus</i>	Dewdrop Mottlegill	soil	
<i>Paradidymella clarkii</i>		dead stem	Rubus fruticosus agg.
<i>Peniophora cinerea</i>		dead branch	Hedera helix
<i>Peniophora proxima</i>		dead branch	Buxus sempervirens
<i>Peniophora quercina</i>	Oak Crust	dead branch	Quercus
<i>Periconia byssoides</i>		dead stem	Urtica dioica

SCIENTIFIC NAME	COMMON NAME	SUBSTRATE	ASSOCIATED ORGANISM
<i>Peronospora arvensis</i>		live leaf	Veronica hederifolia
<i>Peronospora conglomerata</i>		live leaf	Geranium molle
<i>Peronospora ficariae</i>		live leaf	Ficaria verna
<i>Peronospora lamii</i>		live leaf	Lamium purpureum
<i>Peronospora oerteliana</i>		live leaf	Primula vulgaris
<i>Peronospora trifoliorum</i>		live leaf	Trifolium repens
<i>Phaeoseptoria caricicola</i>		dead leaf	Carex riparia
<i>Phoma leguminum</i>		dead pod	Cytisus scoparius
<i>Phoma ulicis</i>		dead spine	Ulex europaeus
<i>Phomopsis calystegiae</i>		dead stem	Calystegia
<i>Phomopsis durandiana</i>		dead stem	Rumex obtusifolius
<i>Phomopsis hysteriola</i>		dead stem	Angelica sylvestris
<i>Phragmidium violaceum</i>	Violet Bramble Rust	live leaf	Rubus
<i>Plagiostoma inclinatum</i>		decaying petiole	Acer pseudoplatanus
<i>Polyporus badius</i>	Bay Polypore	dead log	
<i>Psathyrella fusca</i>		soil/woody litter	
<i>Pseudonectria buxi</i>		live leaf	Buxus sempervirens
<i>Puccinia adoxae</i>		live leaf	Adoxa moschatellina
<i>Puccinia albescens</i>		live leaf	Adoxa moschatellina
<i>Puccinia coronata</i>		live leaf	Dactylis glomerata
<i>Puccinia sessilis</i>	Arum Rust	live leaf	Arum maculatum
<i>Puccinia urticata</i>		live leaf	Urtica dioica
<i>Pyrenopeziza atrata</i>		dead stem	Eupatorium cannabinum
<i>Pyrenopeziza carduorum</i>		dead stem	Cirsium vulgare

SCIENTIFIC NAME	COMMON NAME	SUBSTRATE	ASSOCIATED ORGANISM
<i>Pyrenopeziza chamaenerionis</i>		dead stem	Epilobium hirsutum
<i>Pyrenopeziza escharodes</i>		dead stem	Rubus fruticosus agg.
<i>Ramularia epilobiana</i>		live leaf	Epilobium hirsutum
<i>Ramularia glechomatis</i>		live leaf	Glechoma hederacea
<i>Ramularia lactea</i>		live leaf	Viola odorata
<i>Ramularia rubella</i>		live leaf	Rumex obtusifolius
<i>Ramularia septata</i>		live leaf	Galanthus nivalis
<i>Ramularia urticae</i>		live leaf	Urtica dioica
<i>Ramularia vallisumbrosae</i>		live leaf	Narcissus
<i>Rhopoglyphus filicinus</i>	Bracken Map	dead stem	Pteridium aquilinum
<i>Rhytisma acerinum</i>	Sycamore Tarspot	dead leaf	Acer pseudoplatanus
<i>Sarcoscypha austriaca</i>	Scarlet Elfcup	dead twig	
<i>Septocytia ruborum</i>		live stem	Rubus fruticosus agg.
<i>Septoria stellariae</i>		live leaf	Stellaria media
<i>Spermosporina aricola</i>		live leaf	Arum maculatum
<i>Stegonsporium pyriforme</i>		dead wood	Acer pseudoplatanus
<i>Stereum hirsutum</i>	Hairy Curtain Crust	dead branch	
<i>Tomentella crinalis</i>		decaying wood	
<i>Trametes versicolor</i>	Turkeytail	dead log	
<i>Tremella mesenterica</i>	Yellow Brain	hymenium	Peniophora cinerea
<i>Trochila craterium</i>	Ivy Speckle	dead leaf	Hedera helix
<i>Trochila ilicina</i>	Holly Speckle	dead leaf	Ilex aquifolium
<i>Tubaria furfuracea</i>	Scurfy Twiglet	soil/woody litter	
<i>Unguiculariopsis thallophila</i>		thallus	Lecanora hybocarpa
<i>Urocystis ranunculi</i>		live leaf	Ranunculus

SCIENTIFIC NAME	COMMON NAME	SUBSTRATE	ASSOCIATED ORGANISM
<i>Uromyces hyacinthi</i>	Bluebell Rust	live leaf	Hyacinthoides non-scripta
<i>Ustilago filiformis</i>		live leaf	Glyceria maxima
<i>Venturia ditricha</i>		dead leaf	Betula pendula
<i>Venturia rumicis</i>		live leaf	Rumex obtusifolius
<i>Vialaea insculpta</i>		drooping twigs	Ilex aquifolium
<i>Vouauxiella lichenicola</i>		apothecia	Lecanora hybocarpa
<i>Vuilleminia comedens</i>	Waxy Crust	dead wood	Quercus robur
<i>Xanthoriicola physciae</i>		apothecia	Xanthoria parietina
<i>Xylodon sambuci</i>	Elder Whitewash	trunk	Sambucus nigra